

# 2051 NW 112TH AVE 124

Sweetwater, Florida



REFERENCE NUMBER

YEAR BUILT

A10587299

2006

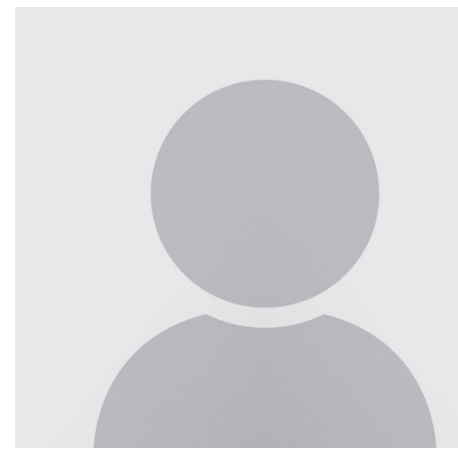
PRICE: USD 1,050,000

## SUMMARY

Marvelous corner with excellent exposure to 112th Ave! SUITES 124-125: +/-4,300 sf OF Office/Showroom space currently being occupied by a Kids therapy/academy. 5 big offices/rooms two restrooms, one breakroom and a big bull pen area of about +/- 1,300 SF. Ideal space for a big showroom, a school, office use, an insurance agency, etc. Beautiful ample area to work with. TENANT OCCUPIED WITH FLEXIBLE TERMS

## AMENITIES

- 101-200 Amps
- Condominium
- Tenant Occupied
- Internet
- Assigned Parking
- 7100



**YURY VARGAS**

**R.R.G.,LLC**

2051 NW 112th Ave No. 111 - Doral, Florida

marcela@remsgroupinc.com

<https://www.southfloridacommercialpropertysearch.com/pdf-listing/501d781023d1bc2bc1683bf1/>

LANGUAGES I SPEAK:

English

