



Miami, Florida



AREA



REFERENCE NUMBER



YEAR BUILT

74,602FT²

A10720188

1987

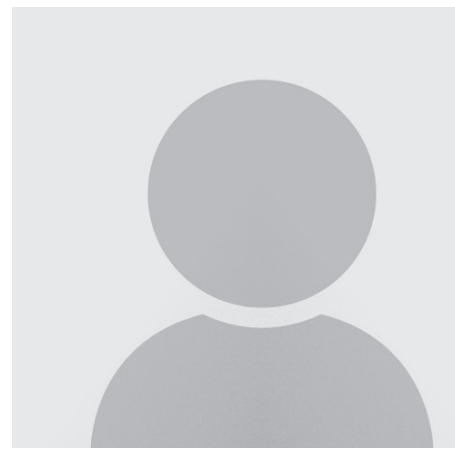
PRICE: USD 835

SUMMARY

Second floor office. Anchored by Pollo Tropical with heavy meal-time traffic. Ample parking with monument marquee's available.

AMENITIES

- 0-100 Amps
- 6100
- Call Listing Agent
- Professional



EDWARD SCHMIDT

E. L. S. Realty Corp.

9655 South Dixie Hwy No. 200 - Miami, Flo

eschmidt@naimiami.com

<https://www.southfloridacommercialpropertysearch.com/pdf-listing/49fb6a7c23d1bc2bc10033b3/>

LANGUAGES I SPEAK:

English

