

877 W PALM DRIVE 4

Florida City, Florida



AREA



REFERENCE NUMBER

520FT²

A10762889

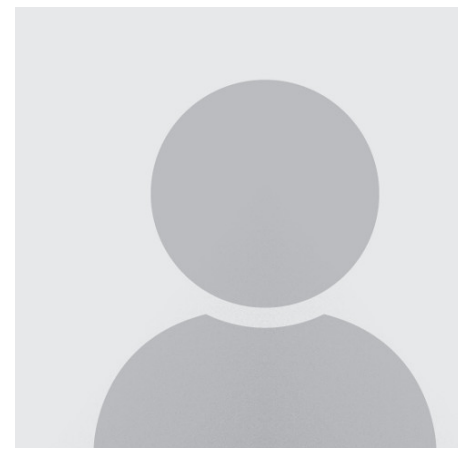
PRICE: USD 17

SUMMARY

BRING ALL OFFERS! 1,200 to 2,400 SF space for Lease Great for many uses: Daycare, Medical Retail, Office, Restaurant, Bakery. Great visibility and plenty of parking.

AMENITIES

- Air Conditioning
- Call Listing Agent
- C-1
- City/mains water
- Shopping Center
- City sewer
- Internet



SONIA DIAZ

The Keyes Company

2121 SW 3 Ave 3rd Floor - Miami, Florida

sdiaz3890@gmail.com

<https://www.southfloridacommercialpropertysearch.com/pdf-listing/4e0c3f6623d1bc2bc160b238/>

LANGUAGES I SPEAK:

English