



Doral, Florida



AREA



REFERENCE NUMBER



YEAR BUILT

965FT<sup>2</sup>

A10829352

2001

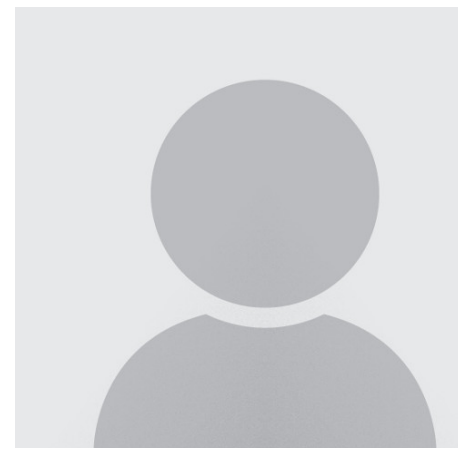
PRICE: USD 263,000

### SUMMARY

• Contemporary architecture. • Improved and open plan office suites. • Open plan units delivered ready for occupancy: Drop ceiling. Lighting. Impact glass windows. Separate electric meter. Separate A/C unit. Demising walls between units but no interior partitions - unless so indicated in the price list. • Modern two (2) story lobby with granite tile. • Two (2) elevators. • Common waiting area on 2nd floor. • Two (2) common area conference rooms on 3rd floor. • Three (3) assigned parking spaces per typical suite. Additional spaces available for sale or lease. • 3 story parking garage.

### AMENITIES

- Covered parking
- Vacant
- Condominium
- 0-100 Amps
- Assigned Parking
- 7300
- 101-200 Amps
- Common Parking



**EDWARD SCHMIDT**

**E. L. S. Realty Corp.**

9655 South Dixie Hwy No. 200 - Miami, Florida

eschmidt@naimiami.com

<https://www.southfloridacommercialpropertysearch.com/pdf-listing/49fb6a7c23d1bc2bc10033b3/>

LANGUAGES I SPEAK:

English