



Doral, Florida



AREA



REFERENCE NUMBER



YEAR BUILT

965FT²

A10831090

2001

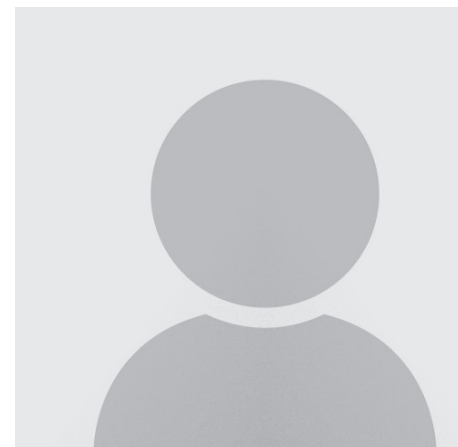
PRICE: USD 1,690

SUMMARY

â€¢ Contemporary architecture. â€¢ Improved and open plan office suites. â€¢ Open plan units delivered ready for occupancy: Drop ceiling. Lighting. Impact glass windows. Separate electric meter. Separate A/C unit. Demising walls between units but no interior partitions - unless so indicated in the price list. â€¢ Modern two (2) story lobby with granite tile. â€¢ Two (2) elevators. â€¢ Common waiting area on 2nd floor. â€¢ Two (2) common area conference rooms on 3rd floor. â€¢ Three (3) assigned parking spaces per typical suite. Additional spaces available for sale or lease. â€¢ 3 story parking garage.

AMENITIES

- â€¢ Covered parking
- â€¢ Vacant
- â€¢ Condominium
- â€¢ 0-100 Amps
- â€¢ Assigned Parking
- â€¢ 7300
- â€¢ 101-200 Amps
- â€¢ Common Parking



EDWARD SCHMIDT

E. L. S. Realty Corp.

9655 South Dixie Hwy No. 200 - Miami, Florida

eschmidt@naimiami.com

<https://www.southfloridacommercialpropertysearch.com/pdf-listing/49fb6a7c23d1bc2bc10033b3/>

LANGUAGES I SPEAK:

English