



1945 NW 17 AVE

Miami, Florida



AREA

6,245FT²



LOT

20,909FT²



REFERENCE NUMBER

A10867433

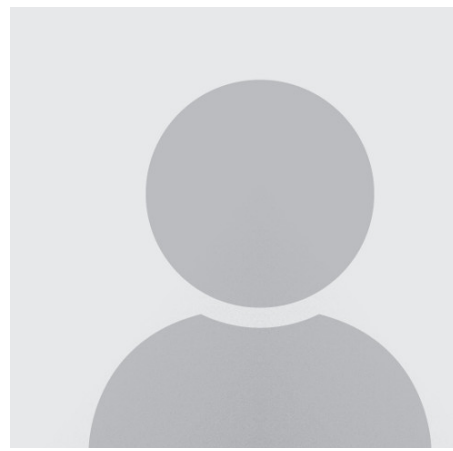
PRICE: USD 2,200,000

SUMMARY

Civic Center/Allapattah Corner Development Site In Rapidly Developing Neighborhood. 21,000sf lot with T-6-8-O zoning, which permits for up to eight stories, 72 res units or 144 with Benefits program, retail office and hotel uses, and more. Neighborhood is a development hotspot, with several projects in close proximity being built by well known local developers such as Neology, CFH Group, 1111, and more. The site is ideal for res development as it is walking distance from Miami's

AMENITIES

- City/mains water
- City sewer
- Electric
- City Location
- Less Than 1 Acre
- Phone Line
- City/County Maintained
- Internet
- Phone Line
- 6100



CARLOS MIRANDA

Fausto Commercial Realty Consultants In

1180 NW 8 ST - Miami, Florida

cfm@faustocommercial.com

<https://www.southfloridacommercialpropertysearch.com/pdf-listing/4c5bd80a23d1bc2bc100e3d2/>

LANGUAGES I SPEAK:

English