

Fort Pierce, Florida



LOT



REFERENCE NUMBER

304,920FT²

A10906117

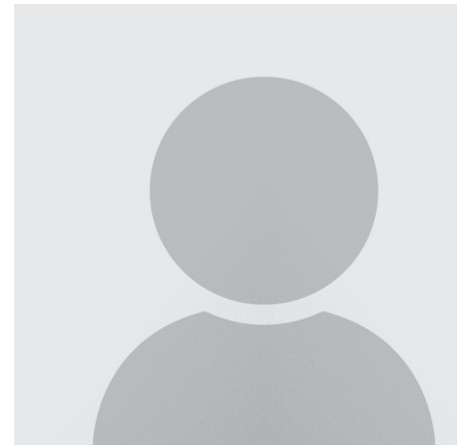
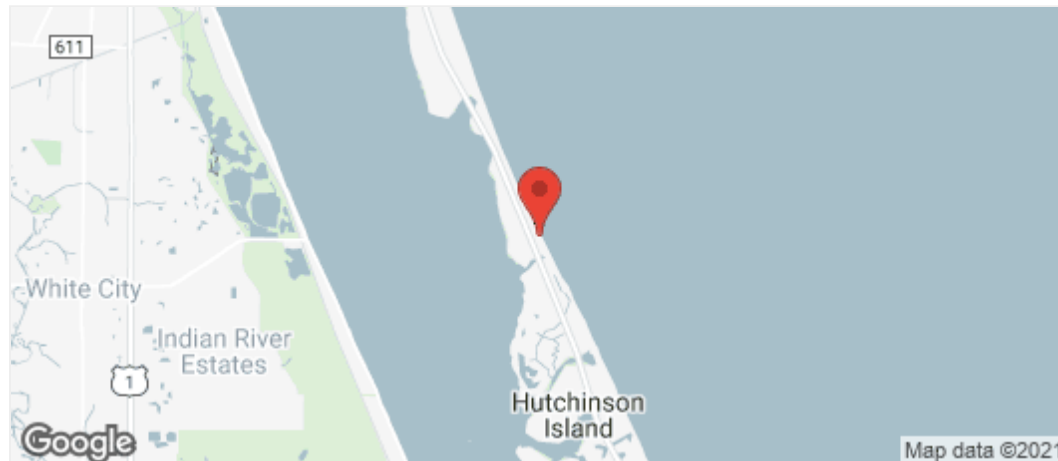
PRICE: USD 2,950,000

SUMMARY

550 feet on the ocean. Direct access from SR A1A. 7 lots (nominal width of 75 feet) in approved site plan. All Environmental Permitting complete with Army Corp, FDEP, and St. Lucie County. Can be shovel ready within weeks. Southernmost parcel before 2 mile of conservation area prohibiting any future development provides amazing beach privacy.

AMENITIES

- Waterfront
- Electric
- State Road
- Deeded Beach Access
- Hutch Is
- City/mains water
- Beach Area
- Internet
- Unrestricted Salt Water A...
- City sewer
- 5 To Less Than 10 Acre Lot
- Phone Line
- Direct Ocean



JAMES P BROWN

BPG Realty

601 Heritage Drive, Ste 140 - Jupiter, Florida

jim@jnbpa.com

<https://www.southfloridacommercialpropertysearch.com/pdf-listing/56024e2b23d1bc2bc179595e/>

LANGUAGES I SPEAK:

English