



LOT



REFERENCE NUMBER

205,429FT²

A10935402

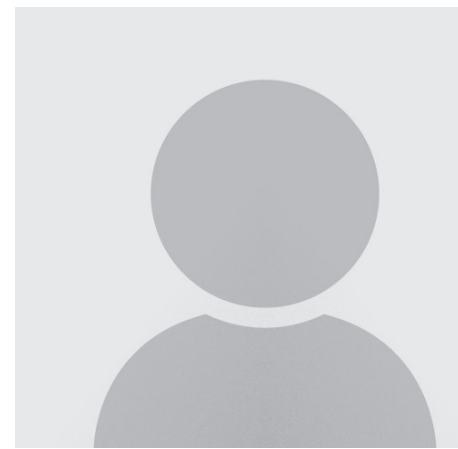
PRICE: USD 1,700,000

SUMMARY

For sale land lot located in Port St. Lucie. 4.72 acres (205,429 SF) valuable commercial parcel, adjacent to Walmart, across the street from Aldi, Home Depot & Lowes. Only commercial parcel situated amongst thousands of residences. Prior site plan approval 2006 for 60,000 SF of retail & office. One of the last vacant land development opportunities in the growing St. Lucie West area.

AMENITIES

- City Location
- Internet
- 2.5-5 Acres
- CG
- City/County Maintained



J. JOSEP PELAYO

Total RE Consultants Inc

11760 W. Sample Road #104 - Coral Springs, Florida

trec@joepelayo.com

<https://www.southfloridacommercialpropertysearch.com/pdf-listing/4c4c857623d1bc2bc100cfd7/>

LANGUAGES I SPEAK:

English

