

Doral, Florida



LOT



REFERENCE NUMBER

82,329FT<sup>2</sup>

A10941738

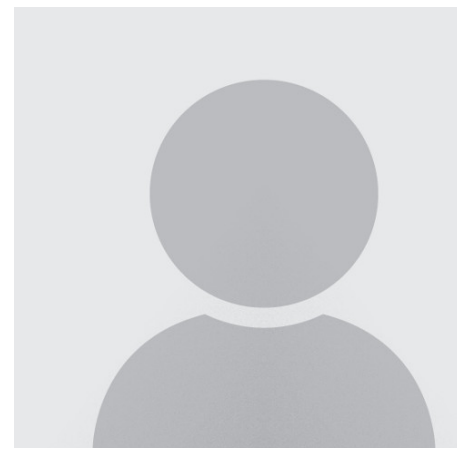
PRICE: USD 4,990,000

### SUMMARY

2 Lots of land, one next to the other, IC & GU zoning, with 650 feet of frontage, overlooks a lake to the south and west with a PLUS at the time of development of the lots, it can be zoned to CC where the percentage to be developed rises more than 200,000 sq ft, in 6 floors, at most, in the area of greatest development in south florida THE CITY OF DORAL. strategically located between Turpike and Palmetto express way, and its proximity to the airport, Dolphin Mall, International Mall and the

### AMENITIES

- Waterfront
- Near Industrial Park
- 2.5-5 Acres
- Legal Access Road
- City Location
- Urban Area Development
- Automobile Traffic
- Public Road
- Corner Location
- 1-2.5 Acres
- City/County Maintained
- BUSINESS



**CESAR SANCHEZ**

**Fortune International Realty**

8551 NW 53 ST Suite A106 - Doral, Florida

cesarusa2016@gmail.com

<https://www.southfloridacommercialpropertysearch.com/pdf-listing/58faa1ea23d1bc2bc17f1816/>

LANGUAGES I SPEAK:

English