



2800 NW 56TH AVE

Lauderhill, Florida



REFERENCE NUMBER

YEAR BUILT

A10967966

1979

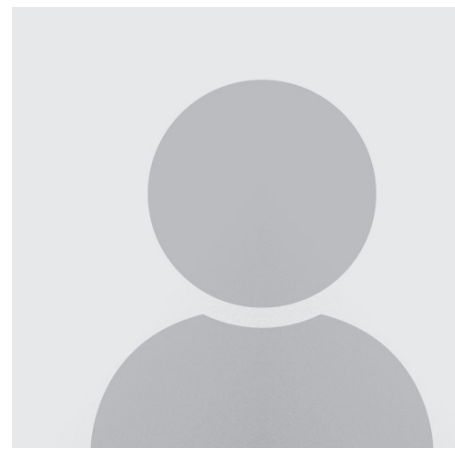
PRICE: USD 2,800,000

SUMMARY

The Brookfield Portfolio provides investors with a rare opportunity to acquire 23 residential units in the 200-unit Brookfield Condo in Lauderhill. The Brookfield Condominium is a 6 building, 4 stories, and 200-unit residential complex originally constructed in 1980. The well maintained common areas offer ample parking, a community pool, and a gym. The fully rented Portfolio consists of 13 (1-1), 1 (2-1), 7 (2-2), and 2 (3-2) units that feature central A/C units, electric appliances, tile flooring, and renovated bathrooms. The portfolio is located in a historically high demand area and benefits from an active HOA. This provides for a low-maintenance opportunity with the ability to generate a constant and growing cash flow with minimal involvement. Cap. Rate 6%

AMENITIES

- Internet
- RM-22



ALFREDO RIASCOS

Gridline Properties

1035 North Miami Ave Suite 403 - Miami, Florida

info@gridlineproperties.com

<https://www.southfloridacommercialpropertysearch.com/pdf-listing/5aa7136823d1bc2bc1810888/>

LANGUAGES I SPEAK:

English