

1200 PONCE DE LEON BLVD 1003

Coral Gables, Florida



REFERENCE NUMBER

A10969398



YEAR BUILT

2018

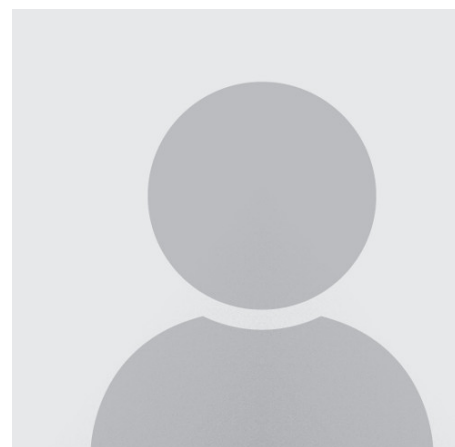
PRICE: USD 45

SUMMARY

1,051 SF available at Ofizzina, the most sophisticated office building in Coral Gables. Raw space ready to be built out to your needs, \$25 x SF allowance for Tenant Improvements. Large windows overlooking Brickell and Downtown.***See attachment for possible build out program***

AMENITIES

- Vacant
- Internet
- 6400



DAVID SALAZAR

Affinity International Realty

999 Brickell Ave. Suite 700 - Miami, Florida

dsalazar@getaffinity.com

<https://www.southfloridacommercialpropertysearch.com/pdf-listing/4c5c491723d1bc2bc100f5d8/>

LANGUAGES I SPEAK:

English

