



351 S CYPRESS RD 3RD FLOOR

Pompano Beach, Florida



REFERENCE NUMBER

YEAR BUILT

A10997514

1985

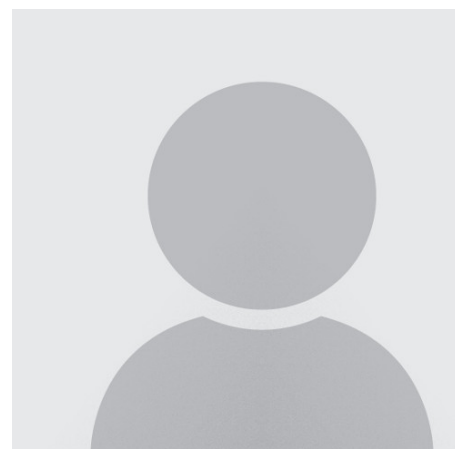
PRICE: USD 20

SUMMARY

For lease wonderful 3 floor offices. Located on a freestanding, 4 story, office building, Square One Business Complex. Completely refurbished in 2009 and upgraded in 2021. Security system with 24/7 access. Independent floor A/C systems / electrical meters. Building managed energy. 158 Parking spaces. Floor has multiple units, from 273 to 2,194 SF available for lease for any office size, 4 total units available. Rent is \$20 PSF + \$8 CAM.

AMENITIES

- Security system
- City Location
- City Road
- B-2
- Carpeted Floors
- Call Listing Agent
- Concrete Roof
- Tile Floors
- Common Parking
- Internet



J. JOSEP PELAYO

Total R E Consultants Inc

11760 W. Sample Road #104 - Coral Springs, Florida

trec@joepelayo.com

<https://www.southfloridacommercialpropertysearch.com/pdf-listing/4c4c857623d1bc2bc100cfd7/>

LANGUAGES I SPEAK:

English

