

LOT



REFERENCE NUMBER

205,603FT<sup>2</sup>

A11003734

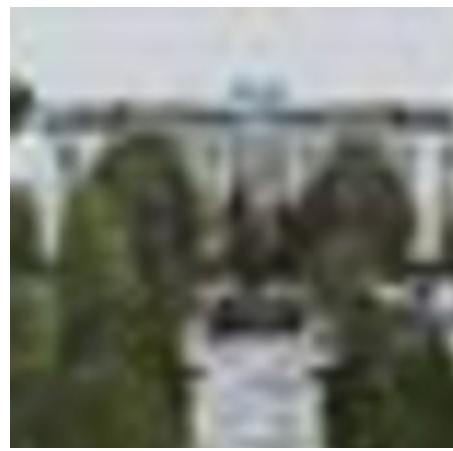
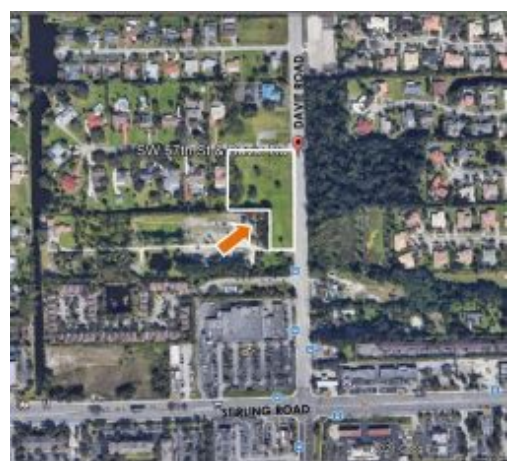
PRICE: USD 1,500,000

**SUMMARY**

EXPECTACULAR LAND IN THE CORRIDOR OF DAVIE RD. 4.72 acres to build a relaxing neighborhood of 24 single family homes, with tropical vegetation, Great investment opportunity, Preliminary project included This land is located in the area where the City of Davie has designed a Master Plan to position this area as regional business center , Great corporate and professional tax rate, 11 MINUTES AWAY FROM THE FORT LAUDERDALE INTERNATIONAL AIRPORT and mayor highways .

**AMENITIES**

- Cable Tv
- Gas
- City/County Maintained
- RESIDENTIAL
- City/mains water
- Urban Area Development
- Internet
- City sewer
- 2.5-5 Acres
- Trash Removal



**DELVIS MOURI**

**Alaimo Realty**

10726 NW 58th St - Doral, Florida

delvis.mouri@gmail.com

<https://www.southfloridacommercialpropertysearch.com/pdf-listing/6076585723d1bc2bc18709af/>

LANGUAGES I SPEAK:

English